

**Community Care Information Management (CCIM)
Integrated Assessment Record (IAR) Project**

Integrated Assessment Record (IAR)

**interRAI CHA
Supplement to the Data Submission
and Technical Specifications**

Document Version 1.2

November 2016

Contents

Purpose of this document	3
Intended audience.....	3
Overview of the IAR	3
1. The interRAI CHA within an IAR Submission	4
1.1. IAR Submission Envelope	4
1.2. Common Element Values and Attributes for all Assessment Submission Types	4
1.3. Transmission Header Envelope	5
2. Encapsulating the interRAI CHA Assessment Data within the IAR Submission.....	7
2.1. CHA Submission Structure (RAI-CHA in CCIM xml Format).....	8
2.2. CHA Submission	8
2.3. Submission Contents Resident Section	9
2.4. Assessment Header Section	10
2.5. Assessment Record Content Element.....	11
3. Consent Submission Schema within the IAR 2.0	12
3.1. Consent 1.0.....	12
3.2. Consent Directive Record	13
3.3. Consent Directive – Person Information Section.....	14
3.4. Consent Directive – Apply to Element.....	15
3.5. Consent Directive – Directive Element	16
3.6. Consent Directive – Recorded By Element	17
3.7. Sample Consent XML	18

Purpose of this document

The Integrated Assessment Record (IAR) application has been implemented with health service providers (HSPs) across Ontario's Local Health Integration Networks (LHINs). As part of this initiative, HSPs have the ability to submit standardized, common assessments into the IAR and view assessment information across multiple sectors.

This interRAI CHA (Community Health Assessment) specific document is a supplement to the existing "Data Submission and Technical Specifications" manual. By reading this supplement, HSPs and their vendors will receive a better understanding of the technical requirements and help to ensure a successful IAR integration.

If there are further questions/concerns regarding this document, contact the Integrated Assessment Record (IAR) Project team at: iar@ccim.on.ca.

Intended audience

This document is intended for:

- Health service providers that are completing or intending to complete the interRAI CHA assessment
- Vendors implementing the IAR solution

Organizations should read and understand this supplement and all the supporting documents. HSPs are responsible for ensuring that their vendor delivers a solution that meets all the requirements outlined by CCIM.

Vendors should use this supplement along with all of the supporting documents to develop data feeds for submitting assessment data to the IAR solution. The project team is available to address any questions throughout the implementation phase. Questions may also be sent to the Support Centre at iar@ccim.on.ca.

Overview of the IAR

The IAR is an application that allows assessment information to move with the client as they go from one health service provider (HSP) to another. HSPs can use the IAR to view timely client assessment information electronically, securely and accurately. It provides a single source of community-based assessment data that enables information management and planning for providers, LHINs and the Ministry of Health and Long-Term Care. The IAR simplifies the integration of assessment data into the electronic health record (EHR).

This interRAI CHA supplement includes examples, definitions and a simple explanation of data submissions to the IAR.

1. The interRAI CHA within an IAR Submission

```
<?xml version="1.0" encoding="UTF-8" standalone="no"?>
<iar:IARSubmission version="2.0" xsi:schemaLocation="http://iar.on.ca/types IARSubmissionDefi
  <iar:TransmissionHeader>
    <submissionId>CHA_1100_2011-07-01T13:31:47Z</submissionId>
    <organization id="1100" name="Organization Full Name"/>
    <exportTimestamp>2011-07-01T13:31:47Z</exportTimestamp>
    <assessmentType>RAI-CHA</assessmentType>
    <application id="1" name="Product Name" vendor="Vendor name" version="2.9"/>
  </iar:TransmissionHeader>
  <iar:SubmissionContent>
    <Record mimeType="text/xml" recordType="Assessment" version="1.0.6">
    <Record mimeType="text/xml" recordType="Consent" version="1.0">
  </iar:SubmissionContent>
</iar:IARSubmission>
```

FIGURE 1 – SAMPLE IAR RAI-CHA SUBMISSION ENVELOPE

1.1. IAR Submission Envelope

The IAR Submission Envelope is a common xml message wrapper that is used to relay a set of assessments to the IAR (Integrated Assessment Record). This message structure is a container that allows for the inclusion of data generated by various assessment schemas. The use of a common message structure enables vendors to create a single submission solution that can be re-used to submit data across multiple health care sectors.

Each submission envelope can contain only a single type of assessment – such as an interRAI CHA, however the same IAR schema can and is used to submit OCAN 1.0.2, 2.0.6, 2.0.7, RAH-MH and RAI-MDS 2.0 assessment data. The parameter values within the envelope change to reflect the type of assessment information contained. When the submission is received, the IAR reads the values to determine the type of assessments contained in the submission content so it can perform the appropriate validations and correctly import the assessment information.

The schema that defines the IAR Submission Envelope is called IARSubmissionDefinitions_v2.0.xsd and is available through the Vendor portion of the CCIM Web site (www.ccim.on.ca). For the full overall IAR Submission specifications refer to the “Data Submission and Technical Specifications”.

1.2. Common Element Values and Attributes for all Assessment Submission Types

“**iar**” **Namespace** - the top level *IARSubmission* element requires the use of a namespace which is to be defined as an xmlns attribute. There are several other attributes that need to be included. Their names and values should appear within the xml as follows:

```
<iar:IARSubmission
xmlns:iar="http://iar.on.ca/types"
xmlns:xsi="http://www.w3.org/2001/XMLSchema-instance"
version="2.0"
xsi:schemaLocation="http://iar.on.ca/types IARSubmissionDefinitions_v2.0.xsd">
```

Note: This sample has been formatted to fit within the width of the page. Actual attribute strings should not contain carriage returns/line feeds.

1.3. Transmission Header Envelope

This portion of the IARSubmission contains values that identify the sending organization (HSP), the type of assessment data contained and the source system.

```
<iar:IARSubmission .....  
<iar:TransmissionHeader>  
  <submissionId>CHA2011022309459999IA.001</submissionId>  
  <organization id="9999" name="Top Level Organization (HSP) name" />  
  <exportTimestamp>2011-02-23T09:45:23Z</exportTimestamp>  
  <assessmentType> CHA</assessmentType>  
  <application id="1" name="Product Name" vendor="Vendor name" version="1.x"/>  
</iar:TransmissionHeader>
```

SubmissionId: This is a source system generated value that identifies a single submission. This value has a **40 character limit** although it is not currently noted within the schema. The purpose of this value is to uniquely identify a single submission and to report back the success or failure of the submission to the sender. It is also used to detect duplicate submissions. The value can be a filename, a sequential number, or any other type of identifying information. Each submission ID must be unique per submission from a particular instance of the source system.

IAR provides a sample of the following format in the “Data Submission and Technical Specifications Guide”:

```
[Assessment Type]<YYYYMMDD><HHMM><OOOO><ZZ>.<999>.xml
```

Where:

[Assessment Type], possible values are ‘interRAI-CHA’ – for community support services, ‘RAI-MH’ – for inpatient hospitals;

YYYYMMDD – The date when the export process started;

HHMM - Time when the export process started (note: 24 hour clock is used);

OOOO – Organization ID, or parent organization ID used in assessment application in multi-site environments (in case of CHA);

ZZ - Target system suffix, ‘IA’ for Integrated Assessment;

999 - File sequence number, a sequence number of extracted file if export is broken into multiple parts, default value 001.

For example, if organization 1234 is submitting a single part interRAI CHA assessment file on July 1, 2009, at 5:05 p.m., the file name will look like this:

```
CHA2009070117051234IA.001.xml
```

For example, if organization 5067 is submitting a single part interRAI CHA assessment file on July 21, 2009, at 6:15 p.m., the file names will look like this:

```
CHA2009072118155067IA.001.xml
```

Note: seconds and milliseconds can be used in the submission Id

Organization: This element defines the sending HSP and contains the Master Number for the organization issued by the Ministry of Health and Long-Term Care. Do not confuse this with the use of a Facility Number. The

Facility number may be contained within each assessment. The combination of the Submission Id and the Organization Id values are used to identify a unique submission from a single overall organization. The submission will only be accepted from organization IDs that are known to the IAR and should not contain leading zeros. "123" is valid, "0123" is invalid.

The *name* attribute is used for display purposes to the clinicians using the system and should be populated with the HSP's full name.

Note: Facility numbers begin with a leading number which identifies the province for the province of Ontario that number is 5 and will display in the field labeled: <FacilityNumber>59999</FacilityNumber> The Organization ID will display as follows: <organization id="9999" name="Organization Full Name"/> (The two will not necessarily be the same.)

assessmentType: This is a key value to tell the IAR what type of assessment data is contained within the submission. For interRAI CHA assessments this value must be "RAI-CHA". This value is for all assessment data submitted that meet interRAI CHA requirements for version 1.0.6 inclusive.

Application ID: This element contains identifying information about the source system. It is vendor related and should contain the business name, product used and version. The ID has significance regarding interRAI CHA submissions and it is recommended that this value contain a vendor related installation number or client ID value if possible.

e.g. <application id="1" name="Product name" vendor="Vendor name" version="1.x"/>

Note: The "ApplicationId" comes up again in consent and the two integers must match

2. Encapsulating the interRAI CHA Assessment Data within the IAR Submission

The **SubmissionContent** element is used to embed assessment data within the IAR Submission Envelope. The assessment itself is stored in its native format, meaning it is a standalone xml document on its own created to its corresponding schema.

There are two methods of accomplishing this, one to wrap the xml within CDATA segment to contain the unaltered CHA xml or to encode the CHA xml using Base64 encoding. Each approach has its merits and the use of either method is up to the vendor.

With the CDATA method, the standard XML processing instruction should not be present at the “record” level. This instruction typically appears as follows `<?xml version="1.0" encoding="UTF-8" ?>` and should be suppressed so it does not trigger additional parsing.

Note: One thing to watch out for when choosing this method is to ensure that inherent xml *special character* or *predefined entity* function does not interfere with the writing of the xml data to the element. This involves the automatic replacement characters such as “<”, “>”, quotes etc. This typically affects the CDATA wrapper itself which renders the document unusable.

Example of CDATA embedded CHA assessment data within a text element:

```
<iar:IARSubmission >
  <iar:TransmissionHeader>
    <iar:SubmissionContent>
      <Record mimeType="text/xml" recordType="Assessment" version="1.0.6">
        <text><![CDATA[<CHASubmission xmlns="http://www.ehealthontario.ca/CC
<?xml version="1.0" encoding="UTF-8" standalone="no"?>
<iar:IARSubmission version="2.0" xsi:schemaLocation="http://iar.on.ca/types IARSubmi
  <iar:TransmissionHeader>
    <submissionId>CHA_1100_2011-07-01T13:31:47Z</submissionId>
    <organization id="1100" name="Organization Full Name"/>
    <exportTimestamp>2011-07-01T13:31:47Z</exportTimestamp>
    <assessmentType>RAI-CHA</assessmentType>
    <application id="1" name="Product Name" vendor="Vendor name" version="2.9"/>
  </iar:TransmissionHeader>
  <iar:SubmissionContent>
    <Record mimeType="text/xml" recordType="Assessment" version="1.0.6">
      <text><![CDATA[<CHASubmission xmlns="http://www.ehealthontario.ca/CCIM" :
      </Record>
      <Record mimeType="text/xml" recordType="Consent" version="1.0">
        <text><![CDATA[<ConsentSubmission xsi:schemaLocation="http://www.ehealth
        </Record>
      </iar:SubmissionContent>
    </iar:IARSubmission>
```

FIGURE 2 – IAR SUBMISSION STRUCTURE CDATA

Example of Base64 encoded interRAI-PS assessment data within a binary element:

```
<?xml version="1.0" encoding="UTF-8" standalone="no"?>
<iar:IARSubmission version="2.0" xsi:schemaLocation="http://iar.on.ca/types 1
  <iar:TransmissionHeader>
    <submissionId>CHA_1100_2011-07-01T13:31:47z</submissionId>
    <organization id="1100" name="Organization Full Name"/>
    <exportTimestamp>2011-07-01T13:31:47z</exportTimestamp>
    <assessmentType>RAI-CHA</assessmentType>
    <application id="1" name="Product Name" vendor="Vendor name" version=
  </iar:TransmissionHeader>
  <iar:SubmissionContent>
    <Record mimeType="text/xml" recordType="Assessment" version="1.0.6">
      <binary compressionType="none">PENIQVN1Ymlpc3Npb24qeG1sbnM9Imh0dD
      </Record>
      <Record mimeType="text/xml" recordType="Consent" version="1.0">
      <binary compressionType="none">PENvbnNlbnRTdWJtaXNzaW9uIHhsaTpsYZE
      </Record>
    </iar:SubmissionContent>
  </iar:IARSubmission>
```

FIGURE 3 – IAR SUBMISSION STRUCTURE BASE64

2.1. CHA Submission Structure (RAI-CHA in CCIM xml Format)

Primary Submission Element and Common Submission Header

The Submission Header contains information regarding the source, year and number of the assessments contained within the submission.

```
<CHASubmission xmlns="http://www.ehealthontario.ca/CCIM" xmlns:xsi="http://www.w3.org/2
  <SubmissionHeader>
    <SubmissionID>CHA_1100_2011-07-01T13:30:47z</SubmissionID>
    <Organization OrganizationID="1100" OrganizationName="Organization Full Name"/>
    <NumberOfRecords>1</NumberOfRecords>
    <SubmissionDateTime>2011-06-27T09:30:47z</SubmissionDateTime>
  </SubmissionHeader>
  <SubmissionContents>
</CHASubmission>
```

FIGURE 4 – CHA SUBMISSION STRUCTURE

2.2. CHA Submission

The CHASubmission element must have the following attribute values:

Schema Version	1.0.6 Each supplement has a version as well but it is all encompassed in the 1.0.6 Supplement versions are as follows: <table border="0" style="margin-left: 20px;"> <tr> <td>CHAVersion</td> <td>9.1.3</td> <td>FSVersion</td> <td>9.1.1</td> </tr> <tr> <td>ALVersion</td> <td>9.2.1</td> <td>MHVersion</td> <td>9.1.1</td> </tr> <tr> <td>DBVersion</td> <td>9.1.1</td> <td></td> <td></td> </tr> </table>	CHAVersion	9.1.3	FSVersion	9.1.1	ALVersion	9.2.1	MHVersion	9.1.1	DBVersion	9.1.1		
CHAVersion	9.1.3	FSVersion	9.1.1										
ALVersion	9.2.1	MHVersion	9.1.1										
DBVersion	9.1.1												
xmlns	http://www.ehealthontario.ca/CCIM												
xmlns:xsi	http://www.w3.org/2001/XMLSchemainstance												

Element Submission Header – Standard Submission Header values

Submission ID – Is also found in the submission header and identifies the submission content

Org ID “123”– This is the number identifying the location/program from where the assessment originates. It should be the same number as the 3-4 digit organization number used within the IAR Submission Envelope which denotes the sending organization of the data. The Organization ID is necessary for the EMPI (Enterprise Master Patient Index) to match the client’s assessments to the submitting organization.

Number of Records – Identifies the number of records in the submission file

Date Time of Submission “2016-05-01T09:30:47”- Should be a date falling within the Fiscal Year of Submission; e.g. Fiscal Year “2016”.

2.3. Submission Contents Resident Section

The **Submission Contents** element contains individual assessments. Each assessment is contained within its own assessment element. The resident element contains Personal Information (PI) and Personal Health Information (PHI) regarding the client to which the assessment belongs. The submission content is used to provide access by a clinician to all assessments stored within the IAR for a particular individual. A minimum of the First and Last Name, as well as Date of Birth, values are required in order to successfully find an individual within the system.

Note: If there is difficulty searching for a resident in the IAR, add the following details to your search: Health Card Number or Gender. This will narrow the search.

```
<CHASubmission xmlns="http://www.ehealthontario.ca/CCIM" xmlns:xsi="http://www.
  <SubmissionHeader>
  <SubmissionContents>
    <Assessment>
      <Client ClientID="CJD3749588">
        <ClientName>
          <FirstName>Charlie</FirstName>
          <MiddleName></MiddleName>
          <LastName>Chaiar</LastName>
          <PreferredName>CHA</PreferredName>
        </ClientName>
        <ClientAddress>
          <AddressLines>
            <AddressLine>123 Address Lane</AddressLine>
          </AddressLines>
          <City>Toronto</City>
          <Province>ON</Province>
          <PostalCode>M9B3Y5</PostalCode>
        </ClientAddress>
      </Client>
    </Assessment>
  </SubmissionContents>
</CHASubmission>
```

FIGURE 5 – CLIENT INFORMATION

Client ID – identifies the client. It should be a unique identification number followed by client specific data.

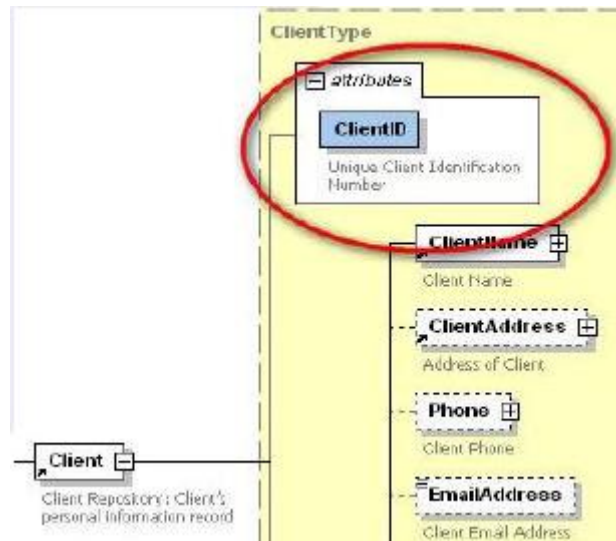


FIGURE 6 – CLIENT ID

2.4. Assessment Header Section

Contains identifying information for the assessment contained. Present for all assessment records.

```

<CHASubmission xmlns="http://www.healthontario.ca/CCIN" xmlns:xsi="http://w
<SubmissionHeader>
<SubmissionContents>
  <Assessment>
    <Client clientID="CID3749599">
  <Forms>
    <AssessmentHeader>
      <AssessmentID>612495880001</AssessmentID>
      <StartDate>2010-04-01</StartDate>
      <CompletionDate>2010-04-30</CompletionDate>
      <Status>N</Status>
      <Revision></Revision>
      <Program></Program>
      <Councillor></Councillor>
    </AssessmentHeader>
    <AssessmentForm version="v1.0">
      <CHAForm>
        <DischargeAssessment>
          <Identification section="A">
            <Name>
              <FirstName>Charlie</FirstName>
  
```

FIGURE 7 – ASSESSMENT HEADER

Assessment ID - This is a unique identifying number for an individual assessment. This is part of the primary key value used by the IAR. No two assessments can have the same assessment ID. Any assessment that is modified slightly or deleted and re-submitted must use the same assessment ID. The IAR will only display the latest copy to the user.

Status - Can be N for New, M for Modify and D for Delete. The submission type is used along with the Assessment ID to control the action taken upon the assessment.

CHAForm - Identifies the type of interRAI CHA assessment record. **Regular Assessment** includes: first assessment (1), routine assessment (2), return assessment (3) significant change in status reassessment (4), and other (7); **Discharge Assessment** includes only Discharge Assessment (5) ; **Discharge Tracking Assessment** includes only Discharge Tracking (6).

2.5. Assessment Record Content Element

All assessment types have their own unique record structure. Below is a sample interRAI CHA First Assessment record. All interRAI CHA assessment records have common elements: Each assessment record has "Identification", an assessment reason attribute "<AssessReason>1</AssessReason>" in this example 1 identifies "routine assessment"

For details regarding this and all elements contained within a particular interRAI CHA assessment record, refer to the interRAI CHA specifications manual.

```

<CHAForm>
<RegularAssessment>
<Identification>
<Name>
  <Gender>2</Gender>
  <BirthDate>1941-09-05</BirthDate>
  <MaritalStatus>4</MaritalStatus>
</Name>
<ID>
<ProvAgencyID>
  <ProvinceID>9</ProvinceID>
  <AgencyID>123123</AgencyID>
</ProvAgencyID>
  <AssessReason>1</AssessReason>
  <AssessRefDate>2010-10-20</AssessRefDate>
  <ClientCareGoals>CHF - Primary Goal</ClientCareGoals>
  <PostalCode>L7L1X7</PostalCode>
  <Residence>1</Residence>
  <LivArrangement>1</LivArrangement>
</Identification>
<IntakeHistory section="B">
  <CaseOpenDate>2010-10-10</CaseOpenDate>
</AboriginalOrigin>
  
```

FIGURE 8 – ASSESSMENT CONTENT

3. Consent Submission Schema within the IAR 2.0

```
<iar:IARSubmission version="2.0" xsi:schemaLocation="http://iar.on.ca/types IARSubmissionDefinitic
  <iar:TransmissionHeader>
    <submissionId>456</submissionId>
    <organization name="RESTORG" id="123"/>
    <exportTimestamp>2011-06-07T09:30:47Z</exportTimestamp>
    <assessmentType>RAI-CHA</assessmentType>
    <application name="CCIMtest" vendor="CCIM" version="2.9" id="1"/>
  </iar:TransmissionHeader>
  <iar:SubmissionContent>
    <Record mimeType="text/xml" recordType="Assessment" version="1.0.6">
      <text><![CDATA[<CHASubmission xmlns="http://www.ehealthontario.ca/CCIM" xmlns:xsi="htt
    </Record>
    <Record mimeType="text/xml" recordType="Consent" version="1.0">
      <text><![CDATA[<ConsentSubmission xsi:schemaLocation="http://www.ehealthontario.ca/CC
    </Record>
  </iar:SubmissionContent>
</iar:IARSubmission>
```

FIGURE 9 – IAR CONSENT SUBMISSION

3.1. Consent 1.0

All assessments will have a one to one relationship with consent. The consent directive can be Grant or Deny.

The IAR Consent schema allows for the inclusion of individual consent directive records that reference a single assessment that is part of a submission. The primary record element is the **ConsentSubmission** element allowing the inclusion of one-to-many **ConsentDirective** records. The schema is contained within a single schema file named IAR_ConsentSubmission-1.xsd. Since the consent records are to be part of every IAR submission, the schema is included within the IAR Submission and Sample Files Toolkit that can be obtained through the Vendor section of the CCIM website – www.ccim.on.ca.

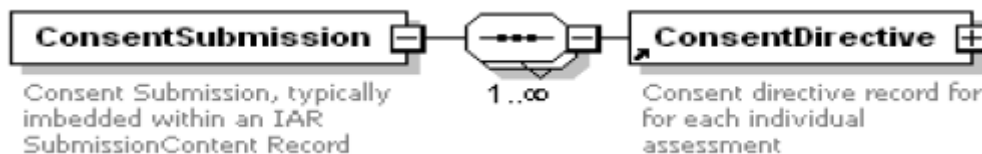


FIGURE 10 – CONSENT SUBMISSION 1.0

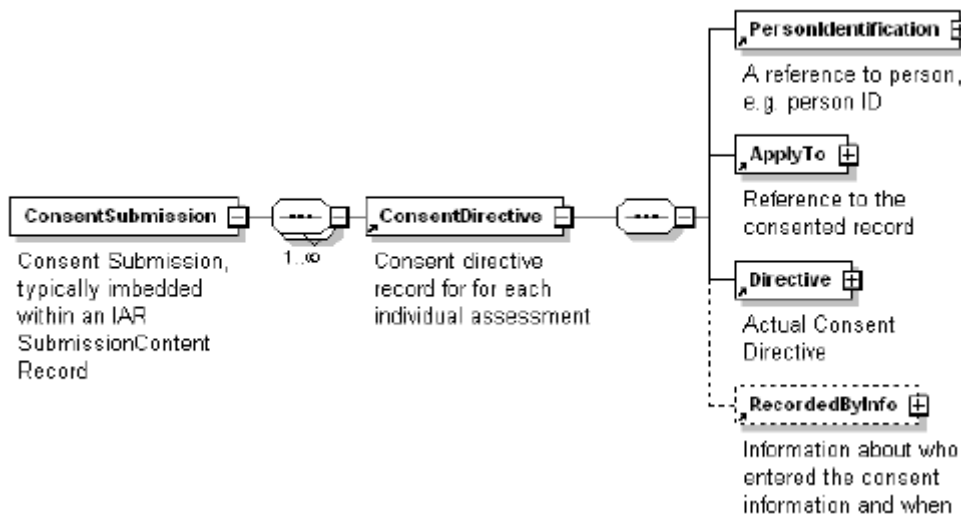


FIGURE 11 – CONSENT SUBMISSION DIRECTIVE

3.2. Consent Directive Record

The Consent Directive Record contains the actual consent information – one record per assessment.

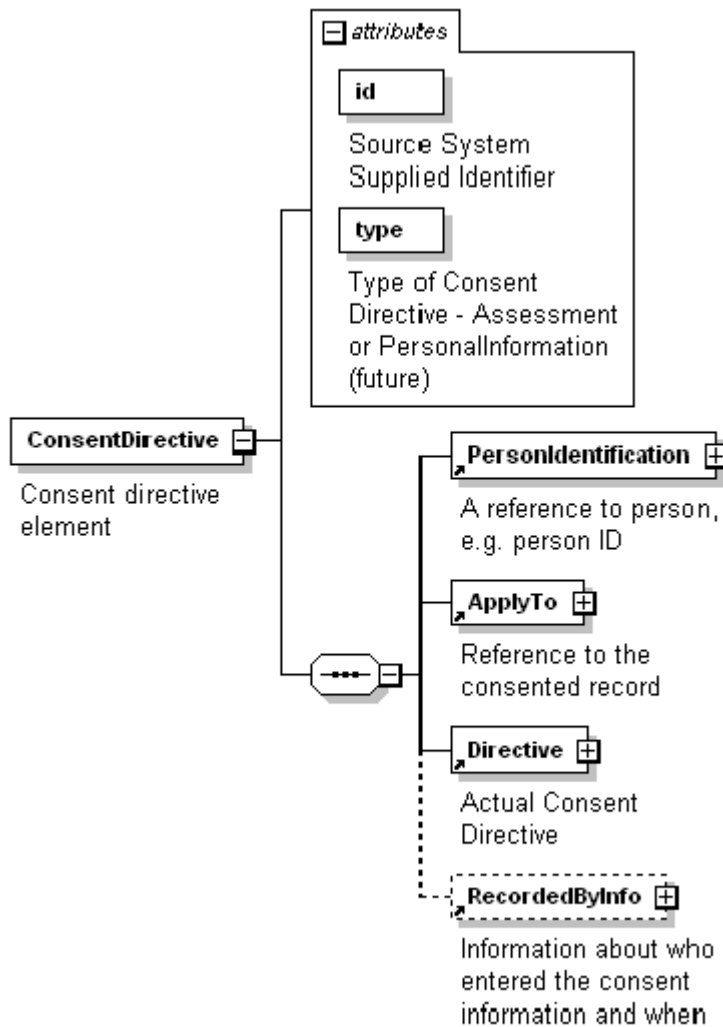


FIGURE 12 – CONSENT DIRECTIVE RECORD

Each Consent Directive Record has the following mandatory fields:

Field	Purpose
id	This field contains a unique record identifier. This is used to isolate all consent directives sent by an HSP and for reference purposes. Value to be generated and supplied by the source system.
type	Defines the type of directive contained – Assessment or Personal Information. IAR Release 3.0 only supports Assessment-based directives. Set to Assessment.
Personal Information	Identifies the person the consent applies to. (Mandatory)
Apply To	Contains the necessary information to match to a single assessment record contained within the IAR Submission. (Mandatory)
Directive	Defines the type of directive received – Grant, Deny in submission. (Mandatory)
Record By Info	Name or user ID and date the consent was received. (Optional)

3.3. Consent Directive – Person Information Section

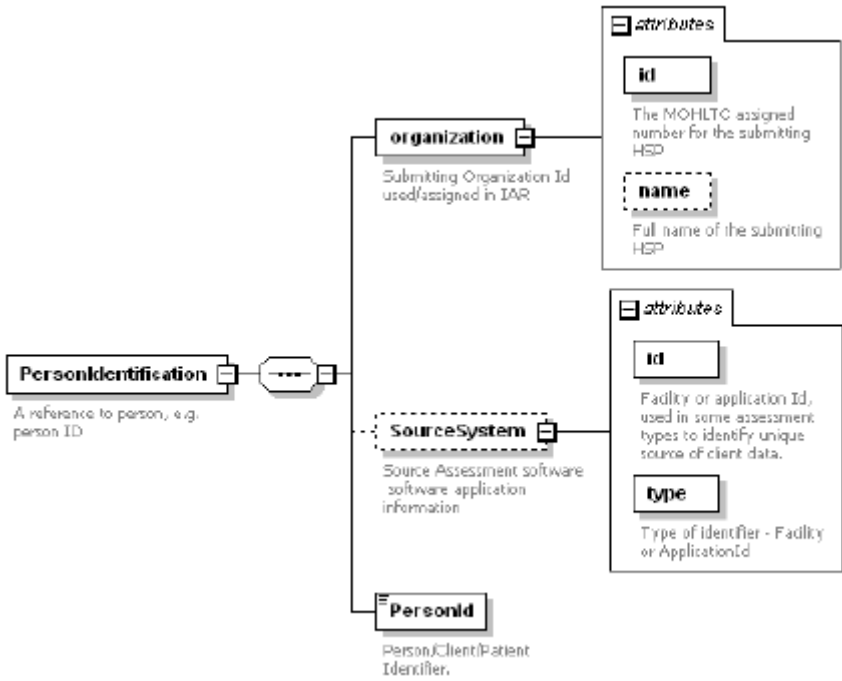


FIGURE 13 – CONSENT DIRECTIVE PERSONAL INFORMATION

Field	Purpose
Organization (Mandatory)	Contains submitting organization information.
Organization@id (Mandatory)	This is the MOHLTC assigned number (usually 3-4 digits) that identifies the source Health Service Provider of the submission. The ID must be a value known to the IAR in order for the submission to be accepted. The value must match the organization@id field within the Transmission Header of the IAR Submission envelope.
organization@name	Full name of the submitting organization. This value appears within the IAR Submission History log to help identify submissions.
Source System	Contains information regarding the source of the submission.
SourceSystem@id (Mandatory)	This can be a 5 digit Facility number (if used by the assessment schema itself such as RAI-MH), or a unique number to identify the instance of an application. When used as an instance identifier, the value must match that of the ApplicationId field within the Transmission Header of IAR Submission envelope.
SourceSystem@type (Mandatory)	Specifies what type of identifier is being used, either a Facility ID or an instance ID of a particular assessment system.
Person Id (Mandatory)	Client Identifying number. Must match that of the assessment the consent relates to within the submission.

3.4. Consent Directive – Apply to Element

Defines which assessment is affected by the consent directive.

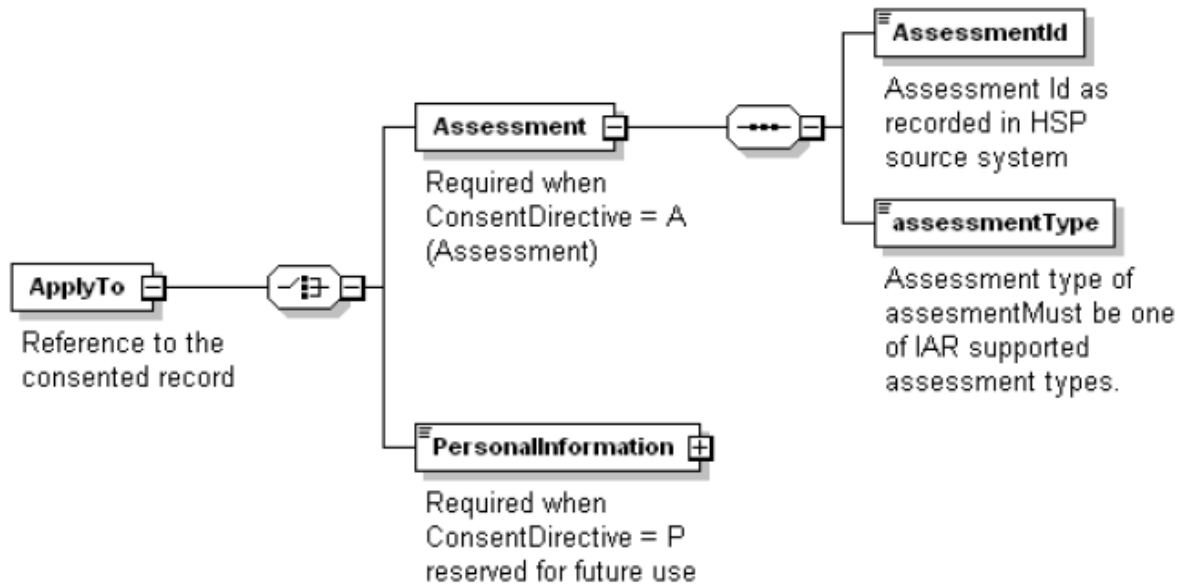


FIGURE 14 – CONSENT DIRECTIVE – APPLY TO

Field	Purpose
Assessment	Mandatory
AssessmentId (Mandatory)	The Assessment number which the consent information applies to. The Person ID from the Personal Information section and the assessment number must match an accompanying assessment within the IAR Submission Envelope.
assessment Type (Mandatory)	Specifies the type of assessment involved. Values are contained within its enumeration and must match that of the assessmentType field within the Transmission Header of IAR Submission envelope. Allowable values are OCAN, RAI-MH, RAI_MDS_2.0, RAI-CA, RAI-HC, and interRAI CHA.
Personal Information	Currently not used. Placeholder for future development.

3.5. Consent Directive – Directive Element

This element contains the actual consent setting to be applied to the assessment.

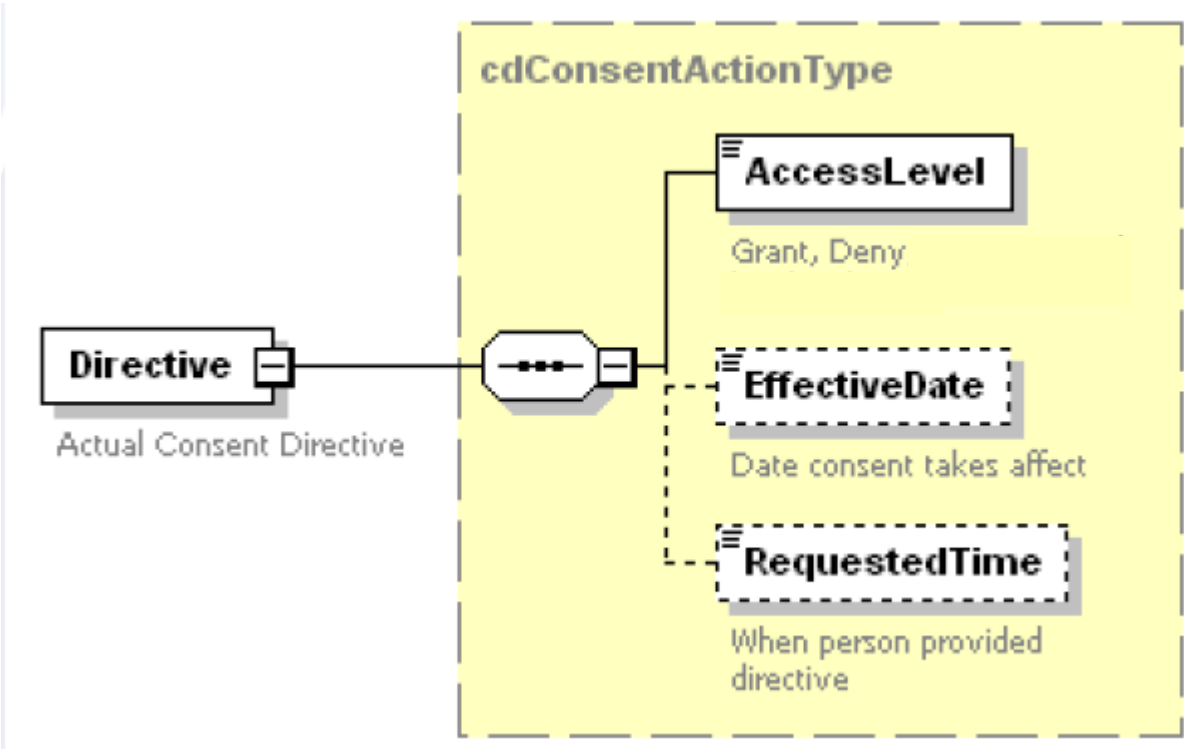


FIGURE 15 – CONSENT DIRECTIVE – DIRECTIVE

Field	Purpose
AccessLevel (Mandatory)	Can be 1 of 2 values: Grant – Assessment will be viewable within the IAR Deny – Assessment will not be viewable within the IAR
Effective Date	Date the directive (if any) is to take effect.
Requested Time	Date and Time the consent directive was received.

3.6. Consent Directive – Recorded By Element

The Recorded By element is optional and will contain the name or user identifier of the clinician who entered the information obtained from the client.

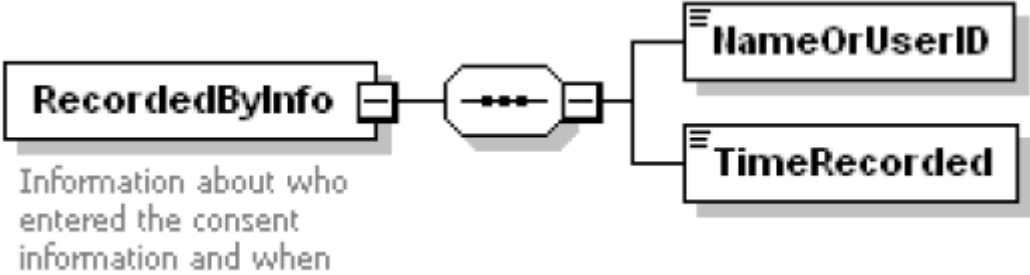


FIGURE 16 – CONSENT DIRECTIVE – RECORDED BY

Field	Purpose
Name or User ID	User name or full name of the individual entering the information.
Time Recorded	Date and Time information was entered.

3.7. Sample Consent XML

These samples demonstrate the 2 types of consent directives – Grant and Deny. It also highlights the difference between the use of the SourceSystem@type attribute.

3.7.1. Consent Directive – Grant – RAI-CHA Assessment Type – Using ApplicationId

```
<?xml version="1.0" encoding="UTF-8"?>
<ConsentSubmission
  xsi:schemaLocation="http://www.ehealthontario.ca/CCIM IAR_ConsentSubmission-1.0.xsd"
  xmlns="http://www.ehealthontario.ca/CCIM"
  xmlns:xsi="http://www.w3.org/2001/XMLSchema-instance">
  <ConsentDirective type="Assessment" id="12345">
    <PersonIdentification>
      <organization name="Name of Organization" id="123"/>
      <!-- Facility type submission - affects the assessment id and client id's
           stored in the IAR -->
      <SourceSystem type="ApplicationId" id="1"/>
      <PersonId>Client1z</PersonId>
    </PersonIdentification>
    <ApplyTo>
      <Assessment>
        <AssessmentId>12345667890</AssessmentId>
        <assessmentType>RAI-CHA</assessmentType>
      </Assessment>
    </ApplyTo>
    <Directive>
      <AccessLevel>Grant</AccessLevel>
      <EffectiveDate>2011-08-17</EffectiveDate>
      <RequestedTime>2011-08-17T09:30:47Z</RequestedTime>
    </Directive>
    <RecordedByInfo>
      <NameOrUserID>Clinician1</NameOrUserID>
      <TimeRecorded>2011-08-17T09:30:47Z</TimeRecorded>
    </RecordedByInfo>
  </ConsentDirective>
</ConsentSubmission>
```

3.7.2. Consent Directive – Deny – RAI-CHA Assessment Type – Using ApplicationId

```
<?xml version="1.0" encoding="UTF-8"?>
<ConsentSubmission
  xsi:schemaLocation="http://www.ehealthontario.ca/CCIM IAR_ConsentSubmission-1.0.xsd"
  xmlns="http://www.ehealthontario.ca/CCIM"
  xmlns:xsi="http://www.w3.org/2001/XMLSchema-instance">

  <ConsentDirective type="Assessment" id="123456">

    <PersonIdentification>
      <organization name="Name of Organization" id="456"/>
      <!-- Facility type submission - affects the assessment id and client id's
      stored in the IAR -->
      <SourceSystem type=" ApplicationId" id="1"/>
      <PersonId>Client1z</PersonId>
    </PersonIdentification>

    <AppyTo>
      <Assessment>
        <AssessmentId>12345667890</AssessmentId>
        <assessmentType>RAI-CHA</assessmentType>
      </Assessment>
    </AppyTo>

    <Directive>
      <AccessLevel>Deny</AccessLevel>
      <EffectiveDate>2011-08-17</EffectiveDate>
      <RequestedTime>2011-08-17T09:30:47Z</RequestedTime>
    </Directive>

    <RecordedByInfo>
      <NameOrUserID>Clinician1</NameOrUserID>
      <TimeRecorded>2011-08-17T09:30:47Z</TimeRecorded>
    </RecordedByInfo>

  </ConsentDirective>
</ConsentSubmission>
```